

## ZS-CC-T

### Dual Spectrum Thermometry Maritime PTZ Camera

ZS-CC-T is equipped to the temperature measurement infrared thermal image PTZ camera, compact structure, embedded large capacity battery and real-time WiFi data transmission.



#### Intelligent Fire Detection

Based on advanced intelligent algorithm to avoid fire incident.



#### More Suitable for Robot

Integrated to the kinds of robots.



#### Perfect Software Access Function

Support kinds of network protocols for easily access third party.



#### One Key Deployment

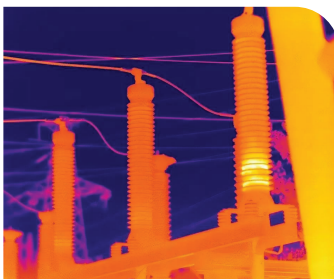
Design of the magnetic composite sucker, built-in large capacity battery, simple operation design.



#### Compact Design

Lightweight min PTZ, more convenient installation.

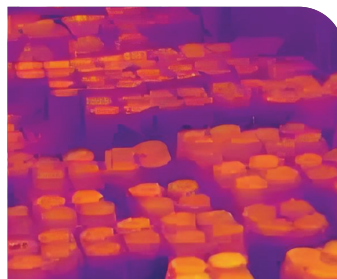
## Applications



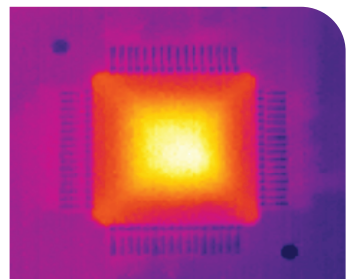
Electricity Inspection



Fire Detection



Warehouse safety



Industrial Inspection

# Specifications

Thermal Module		CC3-T			CC6-T	
Detector		VOx Uncooled FPA				
Resolution/Pixel pitch		384x288/17μm			640x480/17μm	
NETD		<50mK@ 25°C				
Spectral range		8-14μm				
Focus Method		Manual/Motorized(auto focus)				
Focal Length		6.6mm (CC3-T )	10mm	15mm	19mm	25mm
FOV	CC3-T	52.6°40.7	37.5°28.6	24.5°18.5	19.4°14.6	14.8°11.1
	CC6-T	/	59°46	39.8°30.4	31.9°24.2	24.5°18.5
Image adjustment		Auto/Manual adjustment for contrast ratio & brightness & acutance				
Uniformity correction		Auto/Manual shutter correction				
Optical Module						
Image Sensor		1/2.8” Progressive Scan CMOS				
Resolution		1920(H)×1080(V)				
Focal Length&Zoom		5.1-127.5mm, 25X				
FOV		51.69-3.66(wide to narrow)				
IR Range		30m				
Image Effect						
Thermal image process		AGC, IDE,3DNR,HDR				
Color Palette		Optional 9 color palettes(rust, rainbow, white/black, etc.)				
Temperature measurement						
Temperature Range		-20°C~+ 400°C				
Temperature Accuracy		± 2°C				
Temperature Measurement		Multiple temperature measurement rule types (points, areas, lines etc).				
PTZ						
Movement range		Pan:360° continuous; Tilt:-30°~+90°				
Presets		200				
Auto Horizontal Scan		Preset patrol / Auto line scanning & etc				

## Video and Audio

Video Compression	H.264 / H.265	
Main-Stream (Visible)	1920*1080,1280*960,1280*720	
Sub-stream (Visible)	1280*720,640*480,352*288	
Main-Stream (Thermal)	720*576	640*480
Sub-stream (Thermal)	352*288	352*288
Audio compression	G.711	

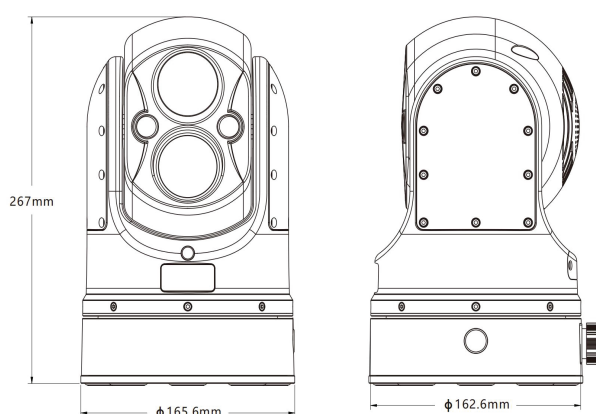
## Network

Protocols	TCP/IP,ICMP,HTTP,DHCP,DNS,RTP,RTSP,RTCP,IGMP,802.1X , ONVIF(ProfileS)
API	SDK, third-party management platform, ONVIF
Common function	Hearbet, password protection, multi-user access control
Security	Support password protection, bonding MAC ID, IP filtration
Simultaneous Live View	10 channels
User/Host level	Up to 10 users, 3 levels: Administrator, Operator, General

## General

Alarm	1x ch input, 1x ch output
Audio	1x ch input, 1x ch output
Serial port	1x ch RS485
Communication Interface	RJ45 10M/100M/1000M self-adaptive Ethernet
Storage	Micro-SD(FT), up to 64GB
Power Supply	DC12V,3A
Power Consumption	<30W
Work Temperature/ Humidity	-20°C~+60°C, <90%RH
Storage temperature	-45°C ~ +75°C
Protection	IP66
Reliability	TVS 6000V lightning protection, surge protection, voltage transient protection
Material	Aluminium alloy
Dimension	φ165.6mmx267mm
Weight	<5Kg
Optional	
Battery	Built-in battery 120Wh (with 18650 model)
Wireless	WiFi module

# Dimension



ThermTec Technology Co., Ltd.  
 Email: [info@thermeyerotec.com](mailto:info@thermeyerotec.com)  
 Website: <https://www.thermeyerotec.com>