

YS Series

Dual Spectrum Mini PTZ Camera

It is equipped to the AI behavior analysis algorithm (YS3 series only), temperature measurement and fire detection in the small size PTZ camera, embedded infrared illuminators and wiper, compact design and stable rotational speed.



Intelligent Fire Detection

Based on advanced intelligent algorithm to avoid fire incident.



Powerful Behavior Analysis Algorithm

Excellent VCA function with CH3 series: Line crossing, intrusion, region entry & exit.



Perfect Software Access Capacity

Support various types of network protocols for easy access to third party.



Reliable Transmission Scheme

Not only high temperature resistance, but anti-low temperature, there is stabler working performance for the brushless DC serving motor.



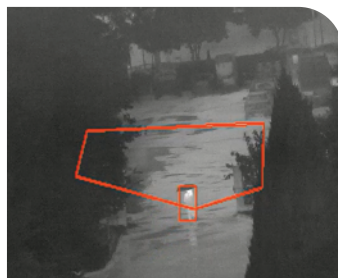
Superior Environmental Adaptability

Applicable for extreme weather, including darkness, rain, fog, smog and etc, protection level IP66.

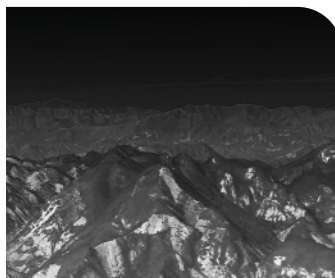
Applications



Perimeter Protection



Border Defender



Fire Detection

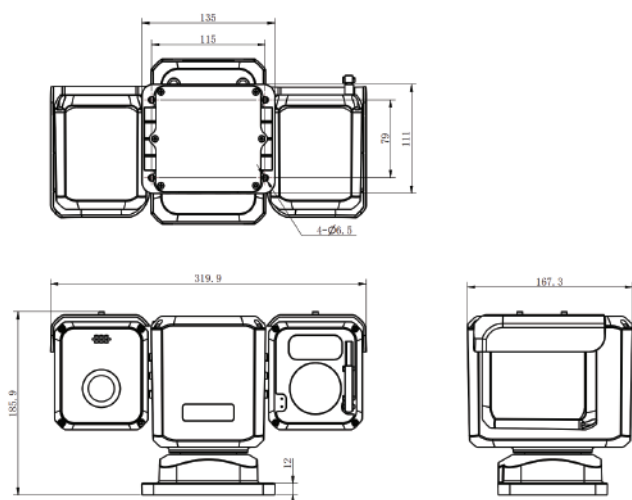


Specifications

Thermal Module		YS3			YS6	
Detector		VOx Uncooled FPA				
Resolution/Pixel pitch		384x288/12μm			640x512/12μm	
NETD		<35mK@ 25°C				
Spectral range		8-14μm				
Focus Method		Manual/Motorized(auto focus)				
Focal Length		7mm	10mm	17mm	25mm	35mm
FOV	YS3	36.4°*27.7	25.9°*19.6	15.4°*11.6	10.5°*7.9	7.5°*5.6
	YS6	/	42°*34	25.4°*20.4	17.4°*14	12.5°*10
Image adjustment		Auto/Manual adjustment for contrast ratio & brightness & acutance				
Uniformity correction		Auto/Manual shutter, background correction				
Optical Module						
Image Sensor		1/2.8” Progressive Scan CMOS				
Resolution		1920(H)×1080(V)				
Focal Length&Zoom		5.1-127.5mm, 25X				
FOV		51.69-3.66(wide to narrow)				
Image Effect						
Thermal image process		AGC, IDE				
Color Palette		Optional 9 color palettes(rust, rainbow, white/black, etc.)				
Smart Function						
VCA		4 VCA types for YS3 only (motion detection, cross line, intrusion, area entry and exit)				
Fire Detection		Support				
Temperature Measurement		3 temperature measurement rule types (points, areas, lines).				
Temperature Range		-20~+135°C				
Temperature Accuracy		±8°C(± 14.4 °F)				
PTZ						
Movement range		Pan:360° continuous; Tilt: -90°~+90°				
Presets		200				
Power Off Memory		Support				

Pan speed	0.1°~100°/s
Tilt speed	0.1°~80°/s
Auto Horizontal Scan	Preset patrol / Auto line scanning & etc.
Video and Audio	
Video Compression	H.264 / H.265
Main-Stream (Visible)	1920*1080,1280*720
Sub-stream (Visible)	1280*720,768*576,640*480,384*288
Main-Stream (Thermal)	768*576,384*288
Sub-stream (Thermal)	384*288
Audio compression	G.711
Network	
Protocols	IPv4/IPv6,HTTP,HTTPS,,FTP,DNS,NTP,RTSP,TCP,UDP,DHCP
API	ISAPI,SDK, third-party management platform, ONVIF
Common function	Hearbet, password protection, multi-user access control
Security	Support password protection, bonding MAC ID, IP filtration
Simultaneous Live View	10 channels
User/Host level	Up to 9 users, 3 levels: Administrator, Operator, General
Web Browser	Google Kernel Browser, Edge
Alarm	1x ch input, 1x ch output
Audio	1x ch input, 1x ch output
Serial port	1x ch RS485
Communication Interface	RJ45 10 M/100 M self-adaptive Ethernet
Storage	Embedded EMMC 16GB
General	
Web Client Language	English
Power Supply	DC9--36V,5A
Power Consumption	<20W
Work Temperature/Humidity	-20°C~+60°C, <90%RH
Storage temperature	-45°C ~ +75°C
Protection	IP66
Reliability	TVS 6000V lightning protection, surge protection, voltage transient protection
Dimension	320mm*170mm*170mm
Weight	<5.5Kg

Dimension



ThermTec Technology Co., Ltd.
Email: info@thermeyerotec.com
Website: <https://www.thermeyerotec.com>