

ThermEye-3V/6V

IP Thermal Imaging Core

ThermEye-V series security IP thermal image core is equipped with high sensitivity, which can get image quality to be always stable output, support persistent zoom and focus.



Sun Protection

Powerful imaging algorithm to reduce sensor to be burnt, it can be automatically enabled sun protective function once meeting strong light.



Dual Video Outputs

IP and analog video outputs, equipping standard BNC and RJ45 video interfaces.



Diverse Lens Types Optional

Multiple optional lens types, 5mm fixed wide-angle lens to the 50mm auto-focus motorized lens.



Abundant Image Modes

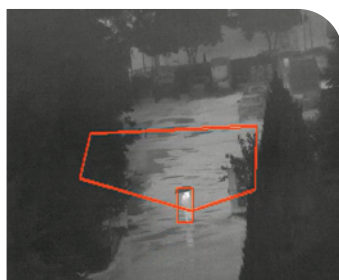
Advanced image algorithm, support HDR, WDR, sea-sky image modes, etc.



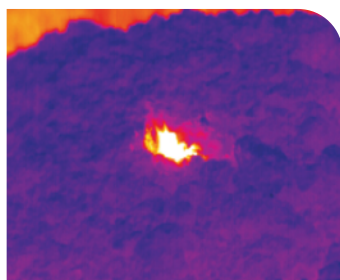
High Temperature Warning

Support abnormal temperature to be alarmed, flexible threshold range can be set.

Applications



Perimeter Protection



Fire Protection



Coast Defence



Border Defence

Specifications

| Model | ThermEye3v | ThermEye6v |
|------------------------|---|--------------|
| Detector | Uncooled VOx infrared FPA | |
| Resolution/Pixel pitch | 384x288/17μm | 640x512/17μm |
| Spectral range | 8~14μm | |
| NETD | ≤40mk@300K | |
| Focus Method | Athermalization&motorized | |
| Digital zoom | 1~8x Continuous | |
| Focal Length | Fixed lens: 9/15/19/25/35/40/50mm, motorized:25/35/40/50/75mm etc. | |
| Sun protection | Support, but as less as toward sun | |
| Image Effect | | |
| Image adjustment | Auto/manual adjustment for contrast ratio & brightness & acutance | |
| Uniformity correction | Auto/manual shutter correction | |
| Noise reduction | 3DNR | |
| Image process | IDE,HDR,sea-sky model etc | |
| Palette | 9 colors opted(rust, rainbow, white/black, etc.), palette customizable | |
| Interface | | |
| Power Supply | DC12V (+9V~+15V) | |
| Network interface | RJ45 10 M/100 M/1000M self-adaptive Ethernet port | |
| Serial port | 1xRS485, 1xRS232 | |
| Alarm | 1x ch input, 1x ch output | |
| Analog video | CVBS(75Ω)PAL | |
| Storage | Micro-SD(FT), up to 64GB | |

Network

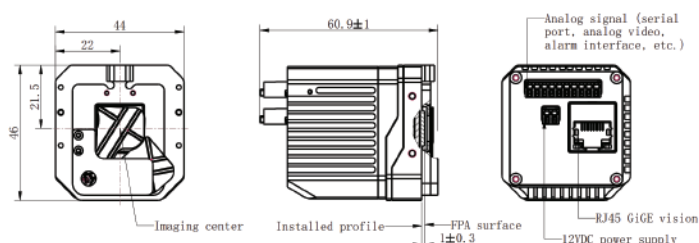
| | |
|------------------------|---|
| Video compression | H.264 |
| Main-Stream | 25fps (720*576) |
| Sub-stream | 25fps (352*288) |
| Protocol | TCP/IP,ICMP,HTTP,DHCP,DNS,RTP,RTSP,RTCP,I GMP,802.1X ,ONVIF(ProfileS) |
| API | SDK, third-party management platform, ONVIF |
| Common function | Hearbet, multi-user access control |
| Security | Support password protection, bonding MAC ID, IP filtration |
| Simultaneous Live View | Up to 10 channels |
| User/Host level | Up to 10 users, 3 levels: Administrator, Operator, General |

General

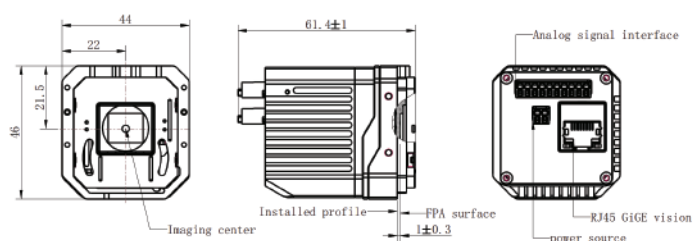
| | | |
|--------------------------------|----------------------|------------------|
| Working temperature & humidity | -40°C~+60°C, < 90%RH | |
| Storage temperature | -45°C ~ +65°C | |
| Power consumption | <3W | |
| Size | 60.9mm*44mm*46mm | 61.4mm*44mm*46mm |
| Weight | <110g (w/o lens) | |

Dimension

ThermEye3V



ThermEye6V



ThermTec Technology Co., Ltd.
Email: info@thermeyerotec.com
Website: <https://www.thermeyerotec.com>