

iThermal-S3/6

IP Thermometry Thermal Imaging Core

iThermal-S is equipped to the accurate temperature measurement infrared thermal imaging core, it is special design with accurate thermometry so as to be suitable for multiple ambient temperatures.



Surroundings Well-Adapted

Suitable for multiple surroundings, especial temperature measurement structural design.



Diverse Lens Types Optional

Kinds of especial temperature measurement lens to be matching.



Perfect Software Access Function

Powerful SDK for easily integrated to third party, support thermometry RAW data output.



Dual Video Outputs

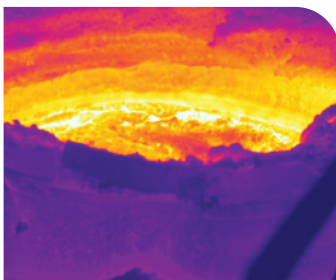
IP and analog video outputs, equipping standard BNC and RJ45 video interfaces.



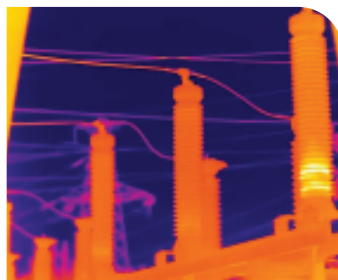
Abundant Image Modes

Advanced image algorithm, support HDR, WDR, linear IDE image modes etc.

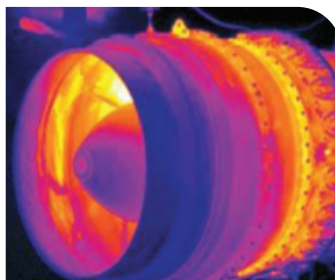
Applications



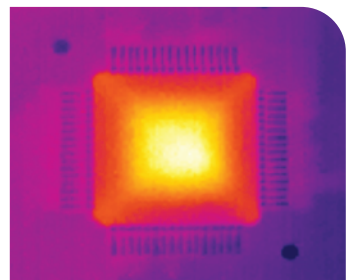
Energy & Chemical



Electricity Inspection



Scientific Research



Industrial Inspection

Specifications

Model	iThermal-S3	iThermal-S6
Detector	Uncooled a-Si infrared FPA	
Resolution/Pixel pitch	384x288/17μm	640x480/17μm
Spectral range	8~14μm	
NETD	≤50mk@300K	
Focus method	Athermalization&motorized	
Focal Length	6.6mm (iThermal-T3 only),9.6mm,15mm,19mm,25mm etc., Motorized: 15mm,25m.	
Sun protection	Support, but as less as toward sun	
	Image Effect	
Image adjustment	Auto/manual adjustment for contrast ratio & brightness & acutance	
Uniformity correction	Auto/manual shutter correction	
Noise reduction	3DNR	
Image process	IDE,HDR,Linear model	
Palette	9 colors opted(rust, rainbow, white/black, etc.), palette customizable	
Measurement temperature		
Temperature Range	-20°C~+400°C	
Accuracy of measurement	±2°C/±2% (max)	
Measurement method	Point/Line/Area/Frame etc.,	
Raw data	Yes	

Network

Video compression	H.264	
Main-Stream	25fps (720*576)	25fps (640*480)
Sub-stream	25fps (352*288)	25fps (352*288)
Protocol	TCP/IP,ICMP,HTTP,DHCP,DNS,RTP,RTSP,RTCP,IGMP,802.1X,ONVIF(ProfileS)	
API	SDK, third-party management platform, ONVIF	
Common function	Hearbet, multi-user access control	
Security	Support password protection, bonding MAC ID, IP filtration	
Simultaneous Live View	Up to 10 channels	
User/Host level	Up to 10 users, 3 levels: Administrator, Operator, General	

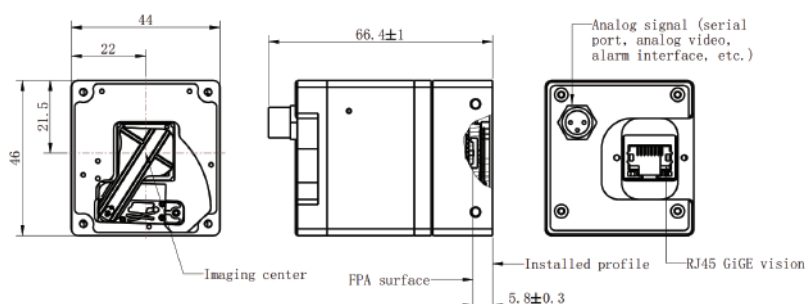
Interface

Power port	DC12V (+9V~+15V)
Ethernet port	RJ45 10 M/100 M/1000 M self-adaptive Ethernet
Serial port	1x RS232, 1x RS485
Analog video	CVBS(75Ω)PAL
Alarm	1x ch input, 1x ch output
Storage	Micro-SD(FT) up to 64GB

General

Working temperature & humidity	-20°C~+60°C, < 90%RH
Storage temperature	-45°C ~ +65°C
Power consumption	<3W
Size	66.4mm*44mm*46mm (w/o lens)
Weight	<300g (w/o lens)

Dimension



ThermTec Technology Co., Ltd.

Email: info@thermeyertec.com

Website: <https://www.thermeyertec.com>