

## Y-T

### Vehicle-Mounted Thermometry PTZ Camera

Y-T is equipped to the temperature measurement infrared thermal image PTZ camera, it is more compatible level with motorized lens up to 50mm, electricity inspection, fire protection and industrial inspection etc.



#### Intelligent Fire Detection

Based on advanced intelligent algorithm to avoid fire incident.



#### High Anti-Shock Level

More suitable for vehicle to be used with stable image quality.



#### Perfect Software Access Function

Easy access of network protocols and temperature measurement raw data to third party platforms.



#### Excellent Anti-Interference Performance

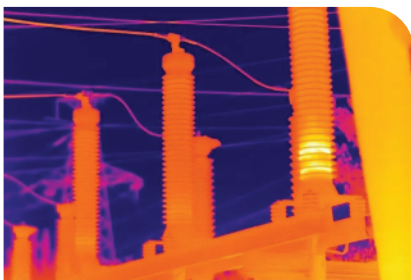
Standard EMC testing, suitable for some of high interference scene like the transformer substation etc.



#### Compact Structure

Lightweight PTZ camera, more convenient installation.

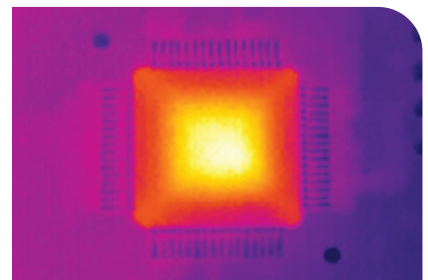
## Applications



Electricity Inspection



Fire Detection



Industrial Inspection

# Specifications

Thermal Module		Y3-T		Y6-T
Detector		VOx Uncooled FPA		
Resolution/Pixel pitch		384x288/17μm		640x480/17μm
NETD		<50mK@ 25℃		
Spectral range		8-14μm		
Focus Method		Manual/Motorized(auto focus)		
Focal Length		25mm	40mm	50mm
FOV	Y3-T	14.8°*11.1	9.3°*7	7.4°*5.6
	Y6-T	24.5°*18.5	15.8°*11.6	12.4°*9.3
Image adjustment		Auto/Manual adjustment for contrast ratio & brightness & acutance		
Uniformity correction		Auto/Manual shutter correction		
Optical Module				
Image Sensor		1/2.8" Progressive Scan CMOS		
Resolution		1920(H)×1080(V)		
Focal Length&Zoom		5.1-127.5mm, 25X		
FOV		51.69-3.66(wide to narrow)		
IR Range		Without		
Image Effect				
Thermal image process		AGC, IDE,3DNR,HDR		
Color Palette		Optional 9 color palettes(rust, rainbow, white/black, etc.)		
Temperature measurement				
Temperature Range		-20℃~+ 400℃		
Temperature Accuracy		± 2℃		
Temperature Measurement		Multiple temperature measurement rule types (points, areas, lines etc).		
PTZ				
Movement range		Pan:360° continuous; Tilt:-90°~+90°		
Presets		200		
Auto Horizontal Scan		Preset patrol / Auto line scanning & etc		

## Video and Audio

Video Compression	H.264 / H.265		
Main-Stream (Visible)	1920*1080,1280*960,1280*720		
Sub-stream (Visible)	1280*720,640*480,352*288		
Main-Stream (Thermal)	720*576	640*480	
Sub-stream (Thermal)	352*288	352*288	
Audio compression	G.711		

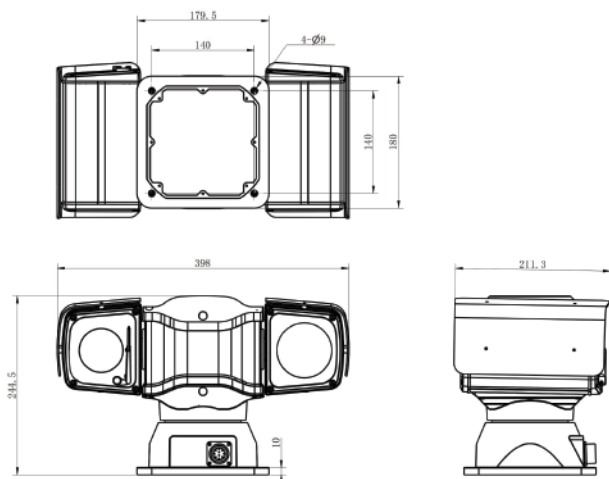
## Network

Protocols	TCP/IP,ICMP,HTTP,DHCP,DNS,RTP,RTSP,RTCP,IGMP,802.1X,ONVIF(ProfileS)		
API	SDK, third-party management platform, ONVIF		
Common function	Hearbet, password protection, multi-user access control		
Security	Support password protection, bonding MAC ID, IP filtration		
Simultaneous Live View	10 channels		
User/Host level	Up to 10 users, 3 levels: Administrator, Operator, General		

## General

Alarm	1x ch input, 1x ch output		
Audio	1x ch input, 1x ch output		
Serial port	1x ch RS485		
Communication Interface	RJ45 10M/100M/1000M self-adaptive Ethernet		
Storage	Micro-SD(FT), up to 64GB		
Power Supply	DC12V,3A		
Power Consumption	<30W		
Work Temperature/Humidity	-20°C~+60°C, <90%RH		
Storage temperature	-45°C ~ +75°C		
Protection	IP66		
Reliability	TVS 6000V lightning protection, surge protection, voltage transient protection		
Material	Aluminium alloy		
Dimension	212mm*398mm*245mm		
Weight	<7Kg		

# Dimension



ThermTec Technology Co., Ltd.  
Email: [info@thermeyerotec.com](mailto:info@thermeyerotec.com)  
Website: <https://www.thermeyerotec.com>