

The ThermTec logo is located in the top right corner. It features a stylized orange 'T' followed by the word 'hermTec' in white, where the 'h' is lowercase and 'ermTec' is uppercase.

ThermTec

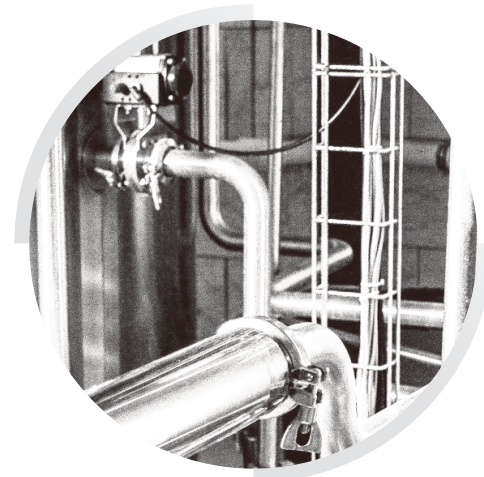
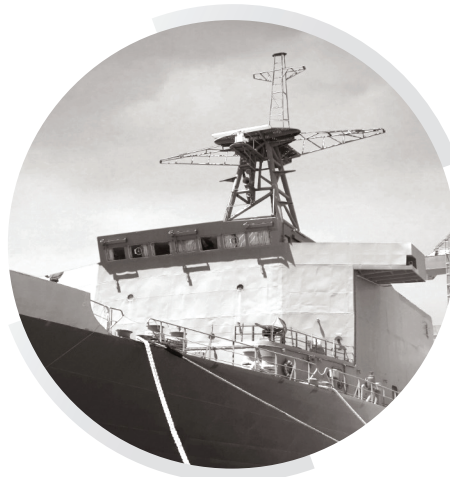
The background of the advertisement is a collage of various thermal images. These include: a close-up of a mechanical component with multiple bolts; a thermal image of a deer's head with large antlers; a circular thermal image of a turbine or engine part; a thermal image of a person's legs in a field; a thermal image of a large fire or explosion; a thermal image of a city skyline with the Transamerica Pyramid; and a thermal image of an industrial facility with storage tanks and piping. A bright, curved light streak arcs across the middle of the collage.

Thermal Imaging Cores

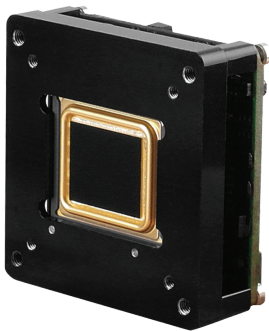
Customized Thermal Solutions

Contents

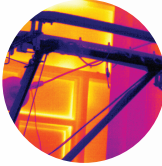
Applications	03
Security IP Thermal imaging Core	04
Industrial Thermomgraphy Core	12
Analog Thermal imaging Core	16



Applications



Fire Prevention



Intelligent Transportation



Security Monitoring



Smart Grid



Industrial Inspection



Maritime Search and Rescue

ThermEye

IP Thermal Imaging Core

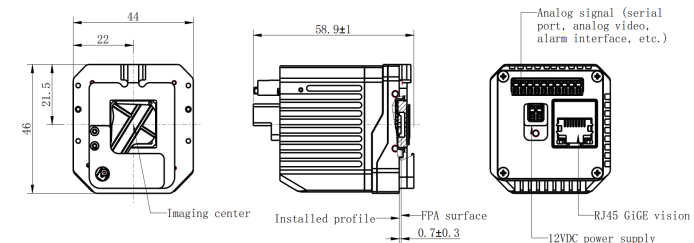


Product Features

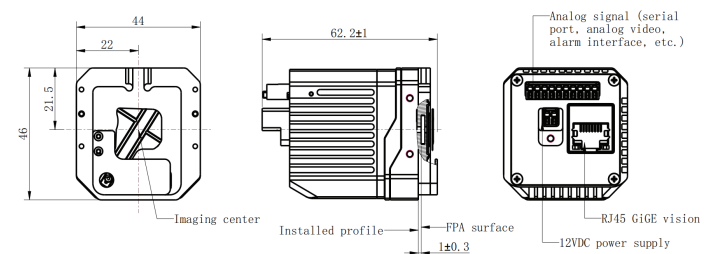
- Multiple image process: IDE, HDR, 3DNR;
- Support continuous digital zoom;
- Professional photoelectric zooming technology;
- Built-in video compression coding, easy for network transmission;
- Easily integrated to third party platform.

Dimension

ThermEye3



ThermEye6



Model	ThermEye3	ThermEye6
Detector	Noncrystalline infrared FPA	
Resolution/ Pixel pitch	384x288/17 μm	640x480/17 μm
Spectral range	8~14um	
NETD	≤ 50mk@300K	
Focus Method	Athermalization&motorized	
Digital zoom	1~8x Continuous	
Focal Length	Fixed lens: 9/15/19/25/35/40/50mm; Motorized: 25/35/40/50/75mm etc.	
Sun protection	Support, but as less as toward sun	
Image Effect		
Image adjustment	Auto/manual adjustment for contrast ratio & brightness & acutance	
Uniformity correction	Auto/manual shutter correction	
Noise reduction	3DNR	
Image process	IDE,HDR,sea-sky model etc	
Palette	9 colors opted(rust, rainbow, white/black, etc.), palette customizable	
Interface		
Power Supply	DC12V (+9V~+15V)	
Network interface	RJ45 10 M/100 M/1000M self-adaptive Ethernet port	

Serial port	1xRS485, 1xRS232	
Alarm	1x ch input, 1x ch output	
Analog video	CVBS(75Ω)PAL	
Storage	Micro-SD(FT), up to 64GB	
Network		
Video compression	H.264	
Main-Stream	25fps (720*576)	
Sub-stream	25fps (352*288)	
Protocols	TCP/IP,ICMP,HTTP,DHCP,DNS,RTP,RTSP,RTCP,IGMP,802.1X , ONVIF(ProfileS)	
API	SDK, third-party management platform, ONVIF	
Common function	Hearbet, multi-user access control	
Security	Support password protection, bonding MAC ID, IP filtration	
Simultaneous Live View	Up to 10 channels	
User/Host level	Up to 10 users, 3 levels: Administrator, Operator, General	
General		
Storage temperature	- 45° C ~ +65° C	
Work temperature & humidity	-40℃~+60℃, < 90%RH	
Power consumption	<3W	
Size	58.9mm*44mm*46mm	62.2mm*44mm*46mm
Weight	<110g (w/o lens)	

ThermEye 3V/6V

IP Thermal Imaging Core

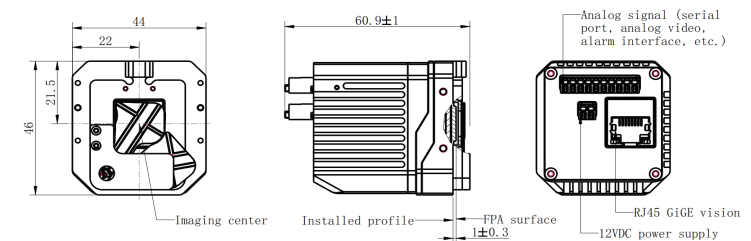


Product Features

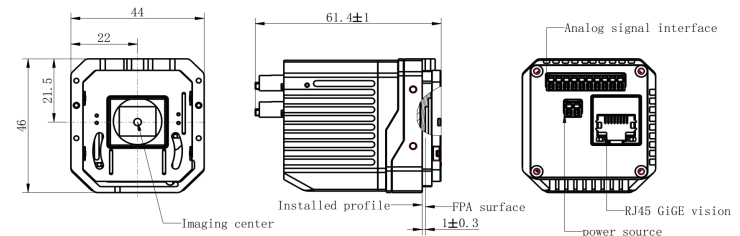
- High sensitivity uncooled Vox detector;
- Support continuous digital zoom;
- Professional photoelectric zooming technology;
- With ethernet and analog video interfaces;
- Easily integrated to third party platform.

Dimension

ThermEye3V



ThermEye6V



Model	ThermEye3V	ThermEye6V
Detector	Uncooled VOx infrared FPA	
Resolution/ Pixel pitch	384x288/17 μm	640x512/17 μm
Spectral range	8~14um	
NETD	≤40mk@300K	
Focus Method	Athermalization&motorized	
Digital zoom	1~8x Continuous	
Focal Length	Fixed lens: 9/15/19/25/35/40/50mm; Motorized: 25/35/40/50/75mm etc.	
Sun protection	Support, but as less as toward sun	
Image Effect		
Image adjustment	Auto/manual adjustment for contrast ratio & brightness & acutance	
Uniformity correction	Auto/manual shutter correction	
Noise reduction	3DNR	
Image process	IDE,HDR,sea-sky model etc	
Palette	9 colors opted(rust, rainbow, white/black, etc.), palette customizable	
Interface		
Power Supply	DC12V (+9V~+15V)	
Network interface	RJ45 10 M/100 M/1000M self-adaptive Ethernet port	

Serial port	1xRS485, 1xRS232	
Alarm	1x ch input, 1x ch output	
Analog video	CVBS(75Ω)PAL	
Storage	Micro-SD(FT), up to 64GB	
Network		
Video compression	H.264	
Main-Stream	25fps (720*576)	
Sub-stream	25fps (352*288)	
Protocols	TCP/IP,ICMP,HTTP,DHCP,DNS,RTP,RTSP,RTCP,IGMP,802.1X , ONVIF(ProfileS)	
API	SDK, third-party management platform, ONVIF	
Common function	Hearbet, multi-user access control	
Security	Support password protection, bonding MAC ID, IP filtration	
Simultaneous Live View	Up to 10 channels	
User/Host level	Up to 10 users, 3 levels: Administrator, Operator, General	
General		
Storage temperature	- 45° C ~ +65° C	
Work temperature & humidity	-40℃~+60℃, < 90%RH	
Power consumption	<3W	
Size	60.9mm*44mm*46mm	61.4mm*44mm*46mm
Weight	<110g (w/o lens)	

ThermEye-D

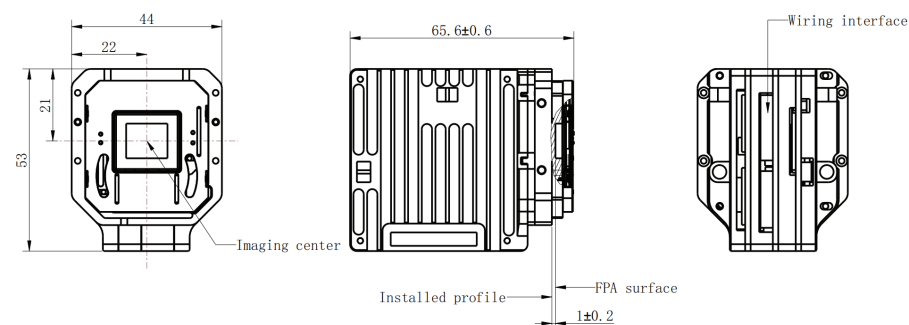
IP Thermal Imaging Core



Product Features

- Built-in video compression coding, easy for network transmission;
- Intelligent high-temperature pre-alarming with variously adjustable grades;
- Embedded intelligent analysis supports motion detection, line crossing detection, regional entry/exit detection;
- Professional photoelectric zooming technology;
- Abundant image algorithm: AGC, 3DNR, IDE.

Dimension



Model	ThermEye-D32	ThermEye-D62	ThermEye-D67
Detector	Uncooled VOx infrared FPA		
Resolution/ Pixel pitch	384x288/12 μm	640x512/12 μm	640x512/17 μm
Spectral range	8~14um		
NETD	≤35mk@ 300K		
Focus Method	Motorized/Athermalized		
Focal Length	Fixed lens: 9/15/19/25/35/40/50mm; Motorized:25/35/40/50/75mm etc.		
Sun protection	Support, but as less as toward sun		
Image Effect			
Image adjusting	Auto/manual adjustment for contrast ratio & brightness & acutance		
Uniformity correction	Auto/manual shutter & background correction		
Noise reduction	3DNR		
Image process	IDE		
Palette	9 colors opted(rust, rainbow, white/black, etc.), palette customizable		
Intelligent functions	Motion detection, cross line, intrusion, area entry and exit. Automatic detection(human, vehicle and vessel), tracking, PIP		
Measurement Temperature			
Temperature Range	-20℃~+150℃		
Accuracy of measurement	±8℃		
Measurement method	3 temperature measurement rule types (points, areas, lines).		
Common function	password protection, access control with multi-user		
Smart Function			
High temperature alarm	Yes, support rule to be set		
VCA	4 VCA types for ThermEye-D32 only (motion detection, cross line, intrusion, area entry and exit)		
AI	Human&vehicle, fire detection	Fire detection	

Network			
Video compression	H.264/H.265		
Main-Stream	25fps (768*576,384*288)	25fps (640*512)	25fps (640*512)
Sub-stream	25fps (384*288)	25fps (384*288)	25fps (384*288)
Protocol	IPv4/IPv6,HTTP,HTTPS,,FTP,DNS,NTP,RTSP,TCP,UDP,DHCP		
API	SDK, third-party management platform, ONVIF ,CGI,ISAPI		
Common function	Hearbet, password protection, multi-user access control		
Security	Authorized user, bonding MAC ID, IP filtration		
Simultaneous Live View	Up to 10 channels		
User/Host level	Up to 9 users, 3 levels: Administrator, Operator, General		
Interface			
Power port	DC12V		
Ethernet port	RJ45 10 M/100 M self-adaptive Ethernet		
Serial port	Dual TTL or 1x TTL with 1x RS485		
Alarm	1x ch input, 1x ch output		
Storage	Embedded EMMC 16GB		
General			
Working temperature & humidity	-40℃~+60℃, < 90%RH		
Storage temperature	- 45° C ~ +75° C		
Power consumption	<2W		
Protection level	Anti-static protection, ESD contact 2KV, air contact 4KV		
Size	65.6mm*44mm*53mm		
Weight	<130g (w/o lens)		

ThermEye-V

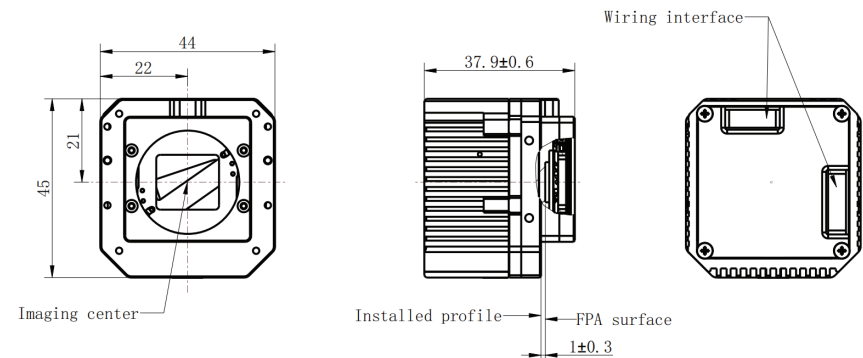
IP Thermal Imaging Core



Product Features

- Lower power consumption;
- Intelligent high-temperature pre-alarming with various adjustable grades;
- Embedded intelligent analysis supports motion; detection.
- Line crossing detection, regional entry/exit detection;
- Abundant image algorithm: AGC, 3DNR, IDE;
- Support ONVIF protocol, easy to be integrated to third party and maintenance;
- Higher accuracy of measurement $\pm 8^{\circ}\text{C}$ (max).

Dimension



Item	ThermEye-V32	ThermEye-V62
Detector	Uncooled VOx infrared FPA	
Resolution/ Pixel pitch	384x288/12 μ m	640x512/12 μ m
Spectral range	8~14um	
NETD	≤35mk@ 300K	
Focus Method	Athermalization&motorized	
Focal Length	Fixed lens: 9/15/19/25/35/40/50mm; Motorized:25/35/40/50/75mm etc.	
Sun protection	Support, but as less as toward sun	
Image Effect		
Image adjustment	Auto/manual adjustment for contrast ratio & brightness & acutance	
Uniformity correction	Auto/manual shutter & background correction	
Noise reduction	3DNR	
Image process	IDE	
Palette	9 colors opted(rust, rainbow, white/black, etc.), palette customizable	
Smart Function		
Temperature Range	-20℃~+150℃	
Accuracy of measurement	±8℃	
Measurement method	3 temperature measurement rule types (points, areas, lines).	
Smart Function		
High temperature alarm	Yes, support rule to be set	
VCA	4 VCA types for ThermEye-V32 only (motion detection, cross line, intrusion, area entry and exit)	
AI	Human&vehicle, fire detection	Fire detection

Network		
Video compression	IH.264/H.265	
Main-Stream	30fps (768*576,384*288)	30fps (640*512)
Sub-stream	30fps (384*288)	30fps (384*288)
Protocol	IPv4/IPv6,HTTP,HTTPS,,FTP,DNS,NTP,RTSP,TCP,UDP,DHCP	
API	SDK, third-party management platform, ONVIF ,CGI,ISAPI	
Common function	Hearbet, password protection, multi-user access control	
Security	Authorized user, bonding MAC ID, IP filtration	
Simultaneous Live View	Up to 10 channels	
User/Host level	Up to 9 users, 3 levels: Administrator, Operator, General	
Interface		
Power port	DC12V	
Ethernet port	RJ45 10 M/100 M self-adaptive Ethernet	
Serial port	1x RS485	
Alarm	1x ch input, 1x ch output	
Storage	Embedded EMMC 16GB	
General		
Working temperature & humidity	-20℃~+60℃, < 90%RH	
Storage temperature	- 45° C ~ +75° C	
Power consumption	<1.5W	
Size	37.9mm*44mm*45mm	
Weight	<100g (w/o lens)	

iThermal-T

IP Thermographic Core

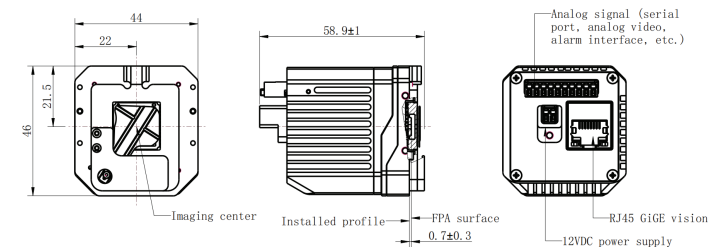


Product Features

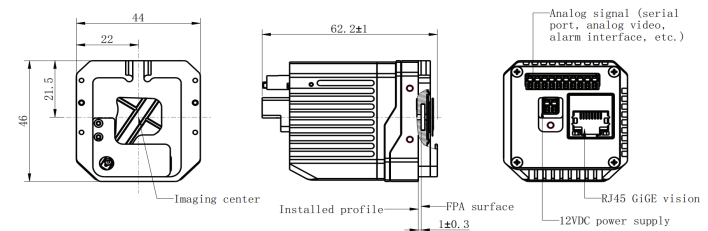
- Full screen measurement function;
- Support event analysis of temperature image;
- Compact module design, convenient integration;
- Powerful image process: AGC, 3DNR, IDE;
- With original data for analysis.

Dimension

iThermal-T3



iThermal-T6



Item	iThermal-T3	iThermal-T6
Detector	Uncooled a-Si infrared FPA	
Resolution	384x288/17 μ m	640x480/17 μ m
Spectral range	8~14 μ m	
NETD	$\leq 50\text{mk}@300\text{K}$	
Focus method	Athermalization&motorized	
Focal Length	6.6mm (iThermal-T3 only),9.6mm,15mm,19mm,25mm etc., Motorized: 25mm, 35mm,50mm etc.,	
Sun protection	Support, but as less as toward sun	

Image Effect

Image adjustment	Auto/manual adjustment for contrast ratio & brightness & acutance
Uniformity correction	Auto/manual shutter correction
Noise reduction	3DNR
Image process	IDE,HDR,Linear model
Palette	9 colors opted(rust, rainbow, white/black, etc.), palette customizable

Measurement temperature

Temperature Range	-20°C~+400° C
Accuracy of measurement	$\pm 5^{\circ}$ C/ $\pm 5\%$ (max)
Measurement method	Point/Line/Area/Frame etc.,
Raw data	Yes

Temperature Measurement

Video compression	H.264	
Main-Stream	25fps (720*576)	25fps (640*480)
Sub-stream	25fps (352*288)	25fps (352*288)
Protocol	TCP/IP,ICMP,HTTP,DHCP,DNS,RTP,RTSP,RTCP,IGMP,802.1X , ONVIF(ProfileS)	
API	SDK, third-party management platform, ONVIF	
Common function	Hearbet, multi-user access control	
Security	Support password protection, bonding MAC ID, IP filtration	
Simultaneous Live View	Up to 10 channels	
User/Host level	Up to 10 users, 3 levels: Administrator, Operator, General	

Interface

Power port	DC12V (+9V~+15V)	
Ethernet port	RJ45 10 M/100 M/1000 M self-adaptive Ethernet	
Serial port	1x RS232, 1x RS485	
Analog video	CVBS(75 Ω)PAL	
Alarm	1x ch input, 1x ch output	
Storage	Micro-SD(FT) up to 64GB	

General

Working temperature & humidity	-20°C~+60°C, < 90%RH	
Storage temperature	- 45° C ~ +65° C	
Power consumption	<3W	
Size	58.9mm*44mm*46mm	62.2mm*44mm*46mm
Weight	<110g (w/o lens)	

iThermal-S

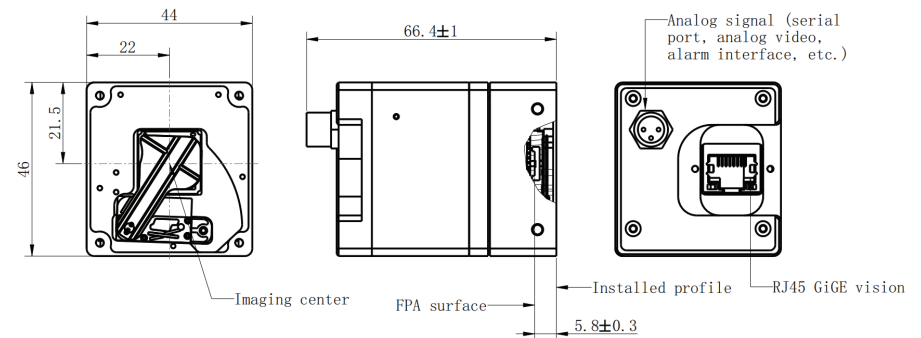
Stable Thermomgraphic Core



Product Features

- High frame frequency image for rapid object;
- High accurate temperature measurement range;
- High range ability temperature measurement scale;
- Rapid response stabilization measurement, well-adapted environment.

Dimension



Item	iThermal-S3	iThermal-S6
Detector	Uncooled a-Si infrared FPA	
Resolution/Pixel pitch	384x288/17 μ m	640x480/17 μ m
Spectral range	8~14 μ m	
NETD	$\leq 50\text{mk}@300\text{K}$	
Focus method	Athermalization&motorized	
Focal Length	6.6mm (iThermal-S3 only),10mm, 15mm,19mm,25mm etc., Motorized: 25mm, 35mm,50mm etc.,	
Sun protection	Support, but as less as toward sun	

Image Effect

Image adjustment	Auto/manual adjustment for contrast ratio & brightness & acutance
Uniformity correction	Auto/manual shutter correction
Noise reduction	3DNR
Image process	IDE,HDR,Linear model
Palette	9 colors opted(rust, rainbow, white/black, etc.), palette customizable

Thermometry

Temperature Range	-20°C~+400° C
Accuracy of measurement	$\pm 2^{\circ}$ C/ $\pm 2\%$ (max.)
Measurement method	Point/Line/Area/Frame, etc.
Raw data	Yes

Network

Video compression	H.264	
Main-Stream	25fps (720*576)	25fps (640*480)
Sub-stream	25fps (352*288)	25fps (352*288)
Protocol	TCP/IP,ICMP,HTTP,DHCP,DNS,RTP,RTSP,RTCP,IGMP,802.1X , ONVIF(ProfileS)	
API	RJ45 10 M/100 M/1000M self-adaptive Ethernet port	
Common function	Hearbet, multi-user access control	
Security	Support password protection, bonding MAC ID, IP filtration	
Simultaneous Live View	Up to 10 channels	
User/Host level	Up to 10 users, 3 levels: Administrator, Operator, General	

Interface

Power port	DC12V (+9V~+15V)
Ethernet port	RJ45 10 M/100 M/1000 M self-adaptive Ethernet
Serial port	1x RS232, 1x RS485
Analog video	CVBS(75 Ω)PAL
Alarm	1x ch input, 1x ch output
Storage	Micro-SD(FT) up to 64GB

General

Working temperature & humidity	-20° C~+60° C; <90%RH
Storage temperature	-45°C~+65°C
Power consumption	<3W
Size	66.4mm*44mm*46mm
Weight	<300g (w/o lens)

Quantum500D/700D

Security Analog Thermal imaging Core

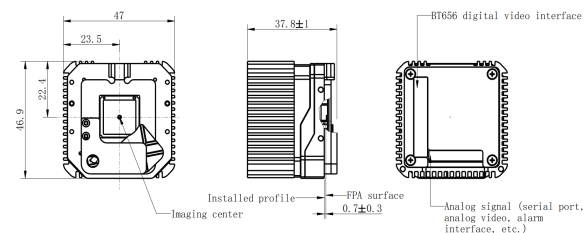


Product Features

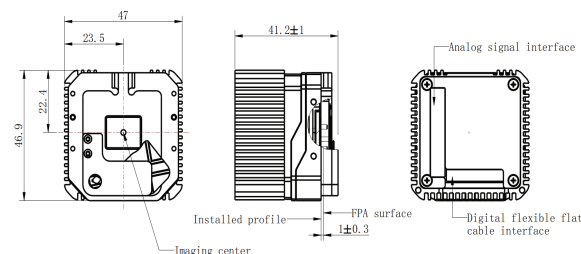
- Powerful IDE image detail enhancement algorithm;
- Leading HDR (Wide Dynamic Range) processing technology;
- Professional photoelectric zooming technology;
- Support digital video output;
- Extensible interfaces for further development;
- Various uncooled infrared detector: a-Si and Vox.

Dimension

Quantum700D



Quantum500D



Item	Quantum700-D	Quantum500-D
Detector	Noncrystalline infrared FPA	
Resolution/ Pixel pitch	384x288/17 μ m	640x480/17 μ m
NETD	$\leq 50\text{mk}@300\text{K}$	
Spectral range	8~14 μ m	
Focus Method	Athermalization&motorized	
Focal length	Fixed lens: 9/15/19/25/35/40/50mm; Motorized:25/35/40/50/75mm etc.	
Digital zoom	1~8x Continuous	

Image Effect

Image adjustment	Auto adjustment for contrast ratio & brightness & acutance
Uniformity calibration	Manual/Auto shutter
Noise reduction	3DNR
Image process	IDE,HDR

Palette	9 Pseudo color palettes changeable
---------	------------------------------------

Analog video	720*576,PAL
--------------	-------------

Interface

Power interface	DC:12V (+9~+15V)
-----------------	------------------

Analogue video	CVBS (75Q) PAL/NTSC (Optional)
----------------	--------------------------------

Series port	RS485/RS232/RS422
-------------	-------------------

Digital video	BT656
---------------	-------

General

Working temperature /humidity	-40°C~+60°C,<90%RH
-------------------------------	--------------------

Storage temperature	-45°C~+65°C
---------------------	-------------

Power Consumption	$\leq 1.5\text{w}$	$\leq 1.8\text{w}$
-------------------	--------------------	--------------------

Size(L×W×H)	37.8mm*47mm*46.9mm	41.2mm*47mm*46.9mm
-------------	--------------------	--------------------

Weight	<105g
--------	-------

Quantum700V-D/500V-D

High Sensitivity Analog Thermal Imaging Core

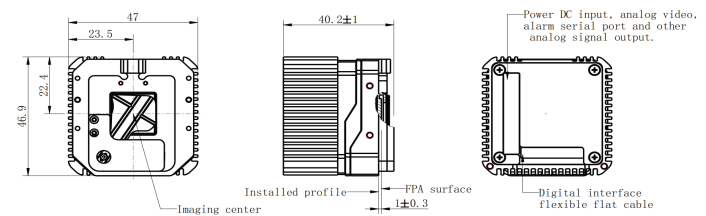


Product Features

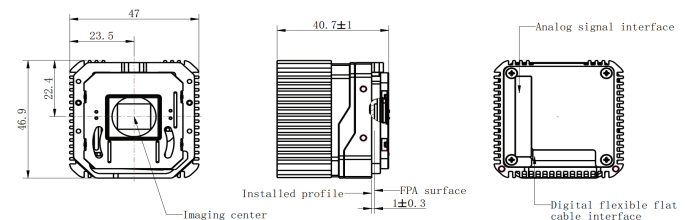
- Leading HDR (Wide Dynamic Range) processing technology;
- Professional photoelectric zooming technology;
- Support digital video & analog video output;
- Various types of uncooled infrared detectors: a-Si and Vox.

Dimension

Quantum700V-D



Quantum500V-D



Item	Quantum700V-D	Quantum500V-D
Detector	Uncooled Vox infrared FPA	
Resolution/ Pixel pitch	384x288/17 μ m	640x512/17 μ m
NETD	$\leq 40\text{mk@300K}$	
Spectral range	8~14 μ m	
Focus Method	Athermalization&motorized	
Focal length	FFixed lens: 9/15/19/25/35/40/50mm; Motorized:25/35/40/50/75mm etc.	
Digital zoom	1~8x Continuous	

Image Effect

Image adjustment	Auto adjustment for contrast ratio & brightness & acutance
Uniformity calibration	Manual/Auto shutter
Noise reduction	3DNR
Image process	IDE,HDR

Palette	9 Pseudo color palettes changeable
---------	------------------------------------

Analog video	720*576,PAL
--------------	-------------

Interface

Power interface	DC:12V (+9~+15V)
-----------------	------------------

Analogue video	CVBS (75Q) PAL/NTSC (Optional)
----------------	--------------------------------

Series port	RS485/RS232/RS422
-------------	-------------------

Digital video	BT656
---------------	-------

General

Working temperature /humidity	-40°C~+60°C, <90%RH
-------------------------------	---------------------

Storage temperature	-45°C~+65°C
---------------------	-------------

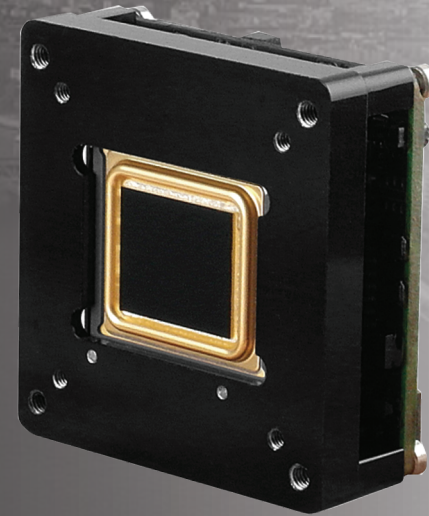
Power Consumption	$\leq 1.5\text{w}$	$\leq 1.8\text{w}$
-------------------	--------------------	--------------------

Size(L×W×H)	40.2mm*47mm*46.9mm	40.7mm*47mm*46.9mm
-------------	--------------------	--------------------

Weight	<105g
--------	-------

M702C/M502C

Analog NST Thermal Imaging Core

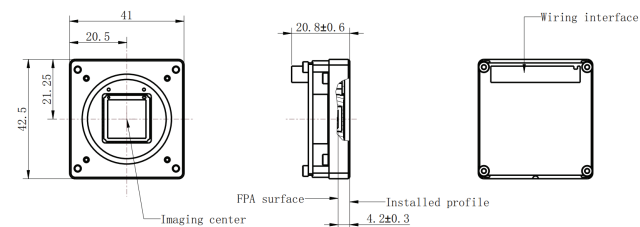


Product Features

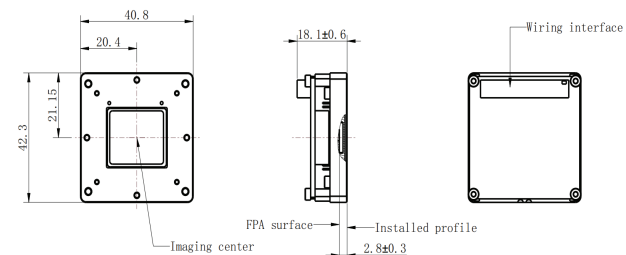
- No shutter with non-uniformity calibrating technology (NUC);
- Super low power consumption less than 0.8W;
- Compact design and light weight;
- High performance of temperature impact and environmental adaptability.

Dimension

M702C



M502C



Item	M702C	M502C
Detector	Noncrystalline infrared FPA	
Resolution/ Pixel pitch	384x288/17 μ m	640x480/17 μ m
NETD	$\leq 50\text{mk}@300\text{K}$	
Spectral range	8~14 μ m	
Focus Method	Fixed lens	
Focal length	9/15/19/25/40/50mm etc	

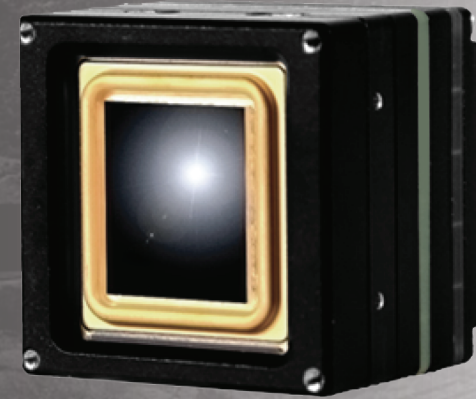
Image Effect		
Image adjustment	Auto adjustment for contrast ratio & brightness & acutance	
Uniformity calibration	NST	
Noise reduction	Digital filter	
Palette	9 Pseudo color palettes changeable	
Resolution	768*576	640*480

Interface	
Power interface	DC:+2.5V~5.5V
Analogue video	Double channels
Series port	RS232
Digital video	BT656(29.5MHz)
Keyboard	4 buttons keyboard

General		
Working temperature /humidity	-20°C~+60°C, for special using:-40°C~+60°C,5%~95%RH	
Storage temperature	-45°C~+65°C	
Power Consumption	$\leq 0.8\text{w}$	$\leq 1.1\text{w}$
Protection level	Shock resistance, vibration:GJB150-16 2.3.1, shock:GJB150-18, testing 7 100g/6ms	
Size(L×W×H)	20.8mm*41mm*42.5mm	18.1mm*41mm*42.3mm
Weight	<40g	

ATOM502C

Mini Analog Thermal Imaging Core

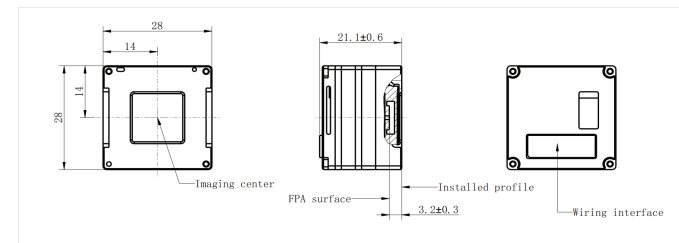


Product Features

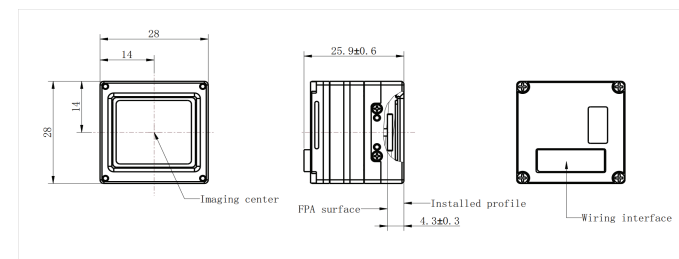
- No shutting with non-uniformity calibrating technology;
- Super low power consumption: $\leq 0.9W$;
- Compact design;
- Instantaneous boot: $<4S$;
- Real time with no delaying image output;
- High performance of temperature impact and environmental adaptability;
- Strengthen structure, high anti-vibration&anti-shock level.

Dimension

ATOM702C



ATOM502C



Item	ATOM702C	ATOM502C
Detector	Noncrystalline infrared FPA	
Resolution/ Pixel pitch	384x288/17 μ m	640x480/17 μ m
NETD	$\leq 50\text{mk}@300\text{K}$	
Spectral range	8~14 μ m	
Focus Method	Fixed lens	
Focal length	9/15/19/25/40/50mm etc	

Image Effect		
Image adjustment	Auto adjustment for contrast ratio & brightness & acutance	
Uniformity calibration	NST	
Noise reduction	Digital filter	
Palette	9 Pseudo color palettes changeable	
Resolution	768*576	640*480

Interface	
Power interface	DC:+2.5V~5.5V
Analogue video	Double channels
Series port	RS232
Digital video	BT656(29.5MHz)
Keyboard	4 buttons keyboard

General		
Working temperature /humidity	-20°C~+60°C, for special using:-40°C~+60°C,5%~95%RH	
Storage temperature	-45°C~+65°C	
Power Consumption	$\leq 0.9\text{w}$	
Protection level	Shock resistance, vibration:GJB150-16 2.3.1, shock:GJB150-18, testing 7 100g/6ms	
Size(L×W×H)	21.1mm*28mm*28mm	25.9mm*28mm*28mm
Weight	<32g	



Lens Indexes for Detectors

Athermalized Lens

Focal Length (mm)	Effective Measuring Distance (m)
6.6mm	1.0m - 5.0m
10mm	2.0m - 9.0m
15mm	2.0m - 13.0m
19mm	2.0m - 16.0m
25mm	2.0m - 24.0m

Motorized Lens

Focal Length (mm)	Effective Measuring Distance (m)
15mm	2.0m - 15.0m
25mm	2.0m - 25.0m
35mm	2.0m - 35.0m
50mm	2.0m - 40.0m

Notes: The table is for reference only, and the performance may vary according to different environments.



Scan this QR code
to follow our website

ThermTec Technology Co., Ltd.
Email: info@thermeyerotec.com
Website: <https://www.thermeyerotec.com/>